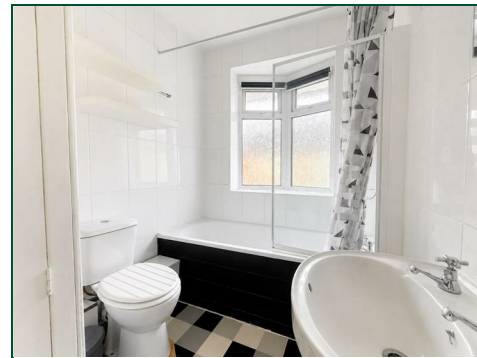




Monks Park Road

Abington, Northampton

oriordanbond
SALES & LETTINGS



Monks Park Road

Abington

NN1 4LY

PRICE £209,995

O’Riordan Bond is delighted to offer for sale this double bay fronted two bedroom end terraced home, situated in the heart of Abington, within a short walk of Abington Park and the bars and restaurants on the Wellingborough Road.

The accommodation comprises entrance porch, entrance hall, cellar, bay fronted sitting room with window seat, open plan kitchen/dining room also with a bay window, two good size double bedrooms and a three-piece bathroom. Outside is a private walled rear garden with gated pedestrian access. Further benefits include uPVC double glazing, gas radiator heating and offered for sale with no onward chain. (C/823/M)

Additional information

- Council Tax Band: B
- Energy Efficiency Rating: D

Viewing

Viewing strictly by appointment – details below

Disclaimer

O’Riordan Bond Estate Agents Limited has not tested apparatus, equipment, fittings or services and so cannot verify they are in working order. The buyer is advised to obtain verification from their solicitor or surveyor.

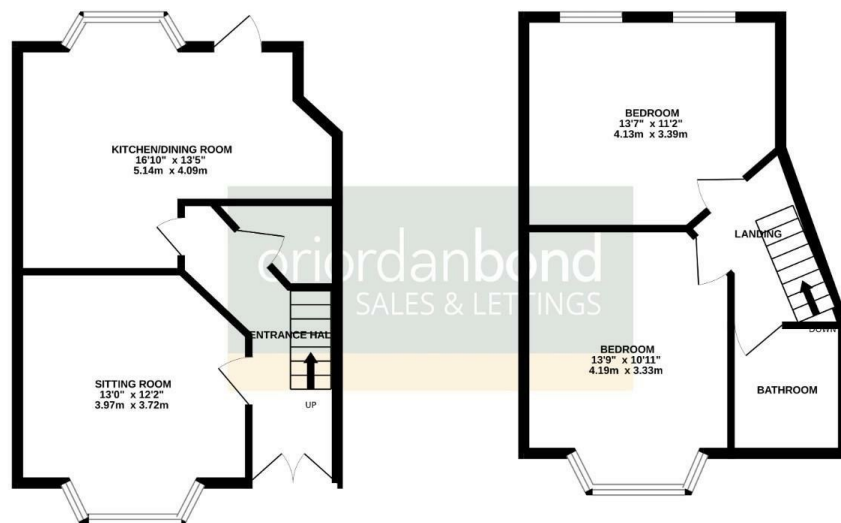
O’Riordan Bond Abington Sales

01604 639007

abington@oriordanbond.co.uk

GROUND FLOOR
400 sq.ft. (37.1 sq.m.) approx.

1ST FLOOR
361 sq.ft. (33.5 sq.m.) approx.



TOTAL FLOOR AREA: 823sq.ft. (76.5 sq.m.) approx.

Whilst every attempt has been made to ensure the accuracy of the floorplan contained here, measurements of doors, windows, rooms and any other items are approximate and no responsibility is taken for any error, omission or mis-statement. This plan is for illustrative purposes only and should be used as such by any prospective purchaser. The services, systems and appliances shown have not been tested and no guarantee as to their operability or efficiency can be given.
Made with Metropix 02026

